

Roles and Responsibilities in Regional Land Use Planning

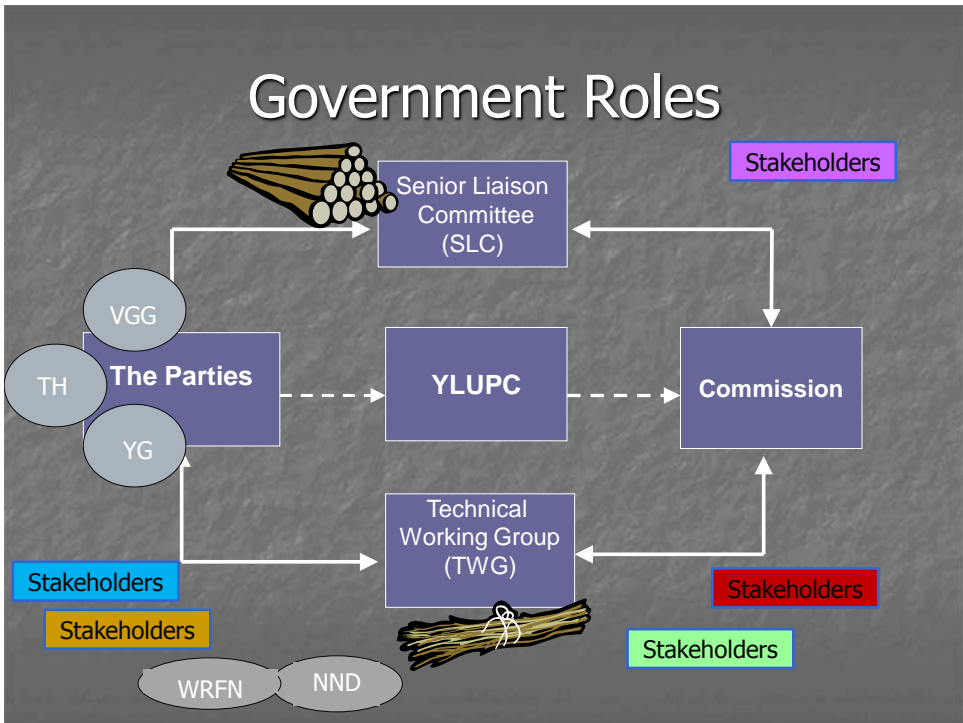
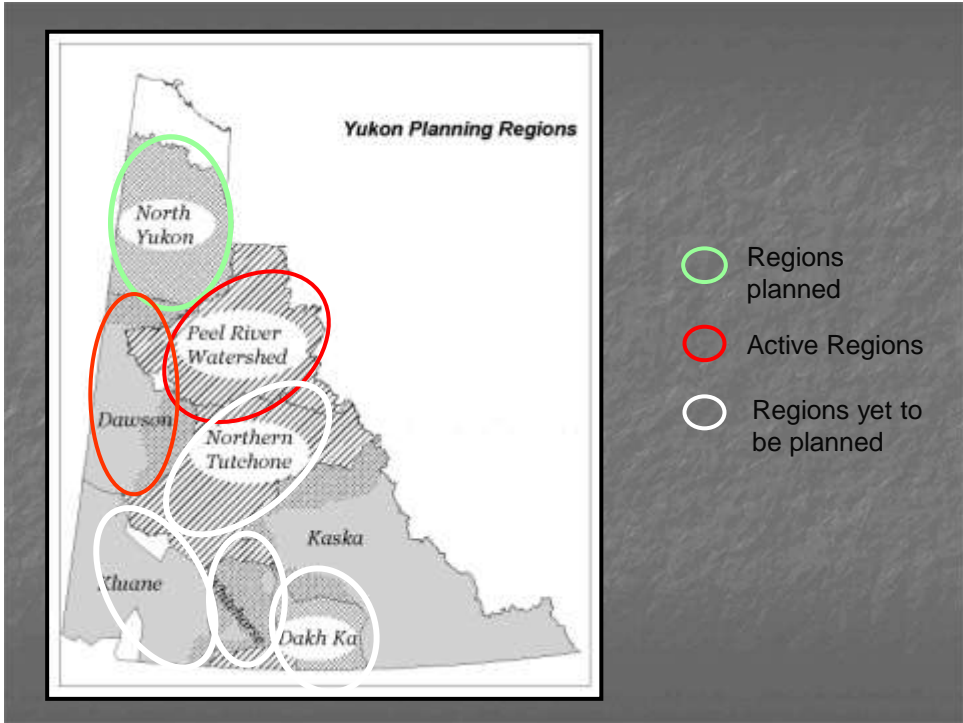
Presented to:
YLUPC Workshop
January, 2014
Whitehorse



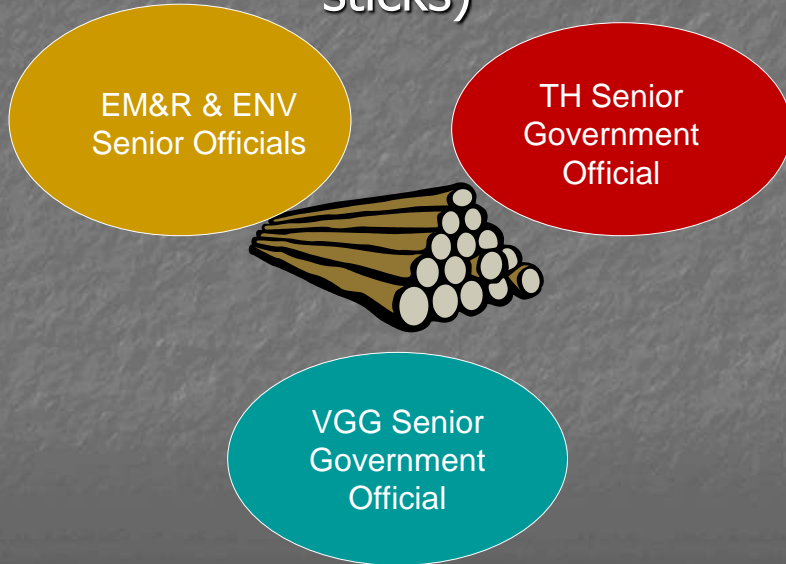
Outline

- Background
- Roles and Responsibilities
- Terms of Reference/MOU
- Processes to date

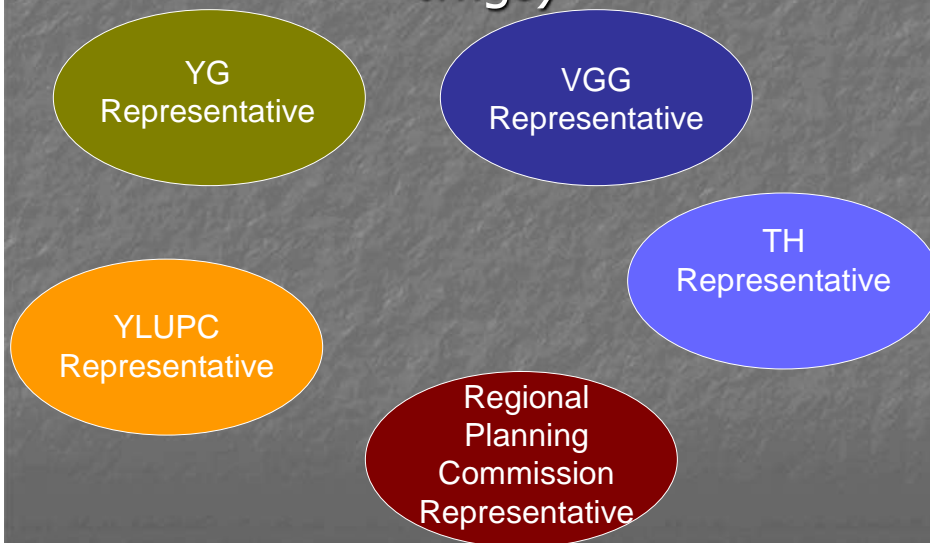




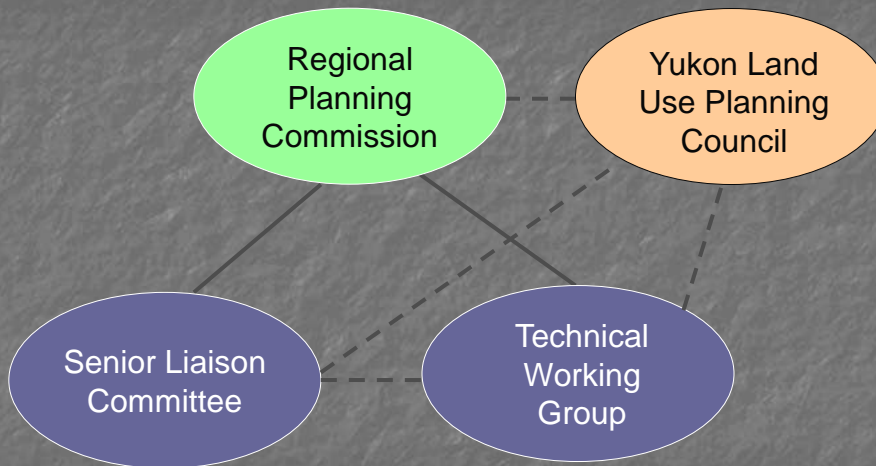
Senior Liaison Committee (SLC aka sticks)



Technical Working Group (TWG aka twigs)



Relationship of Committees



What is the Relationship Between the Commission and the Parties?

- The Commission is charged with creating a land use plan for the approval of Yukon and First Nations governments.
- As the Commission's "clients", what can we do to better support our contractor?

Prior to Agreeing to Plan

- YLUPC recommends to YG and First Nations that a region is ready to plan.
- First Nations and YG evaluate if they are ready to plan in that area.
- If yes, then Technical staff work together with YLUPC to develop a terms of reference (TOR) for the planning process.
- YLUPC recommends the TOR to the governments
- Once Governments approve the TOR, Commission members are nominated.
- YG appoints Commission members.

Terms of Reference

- Developed by the Parties and YLUPC
- Purpose
 - To provide direction to the Commission
 - Determine process and products
 - Clarify roles
 - Establish timelines (workplan)
 - Establish budget
 - And more....

Terms of Reference – con't

- Refines/Defines Boundary
 - Based either on Traditional Territory (North Yukon, Dawson and Teslin) or on other factors (Peel Watershed, Kluane, Whitehorse and Northern Tuchone)



Terms of Reference – con't

- Membership:
 - North Yukon
 - Three nominated by VG, two nominated by YG, one VG citizen nominated by YG
 - Dawson
 - Three nominated by TH (VGG opted not to nominate one), three nominated by YG
 - Peel
 - One nominated by NND, one by TH (with YG), one by VGG, one by GTC (with YG), two by Yukon

Terms of Reference – con't

- Budget and Workplan
 - Overall budget/workplan developed by YLUPC and the Parties
 - Based on previous successful and unsuccessful Commissions
 - Funding disbursed for approved expenses (per budget)
 - More to be determined after this workshop



Terms of Reference, con't

- Operating Procedures
 - Basic rules for the operation of the Commission.
- Participation and Engagement
 - Guidance for the Commission about engaging the public and stakeholders and other groups
 - That development will continue while the planning happens and that the Commission may comment on YESAB projects

Terms of Reference, con't

- Planning Process
 - Planning start-up and information gathering stage (Resource Assessment Report and I&I Report)
 - This is a technical exercise and involves gathering and compiling technical information from a variety of sources.
 - Plan development stage
 - This is where the planning begins and involves comparing the various options that are revealed by looking at the products of the information gathered.

Terms of Reference, con't

- Plan Approval
 - The Commission's end product will be a final recommended plan that identifies values and recommends management goals and directions for each land management unit.
 - The government reject, modify or approve the plan as it applies to their areas of responsibility.
- Amending and Monitoring TOR
 - YLUPC and the Parties consult and reach consensus on any changes to the TOR
 - The Parties approve the changes and monitor compliance

Yukon Government Internal Working Group

Role:

To provide support and information through TWG that:

- is structured
- reflects the input of all affected departments
- is clear, coordinated and consistent
- adds value to the process



Issues

- Chapter 11 is the skeleton upon which regional land use planning is based.
- Does not include details about how to successfully plan for all of Yukon within the funding allocated.
- The first goal (11.1.1.1) addresses the need for a Common Land Use Planning Process for all regions in Yukon.

Where to from here?

- The process to date has been the subject of at least four analysis, each pointing out how the process could be improved.
- We have an opportunity to create the kind of support system that will give the Commissions a better chance to be successful.

The Yukon Government Perspective

A regional land use plan will:

- Provide a balanced approach
- Reflect a variety of interests
- Resolve issues
- Provide clear implementable recommendations
- Create a plan that can be supported and implemented by the Parties
- Be science based and defensible

A Regional land use plan is not:

- A local area development plan
- A detailed zoning map



Recap

- The Parties could do more work up front to prepare the Commission for planning
- The TOR could provide better guidance for the Commission
- The Commission operates per TOR, as agreed to by the Parties
- TWG is main communication conduit for exchange of information and products between the Parties and the Commission
- SLC is for senior level input, advice, and support to the Commission
- The Commission is neutral in its approach to creating the plan it recommends to the Parties

The End

Questions?

Comments?