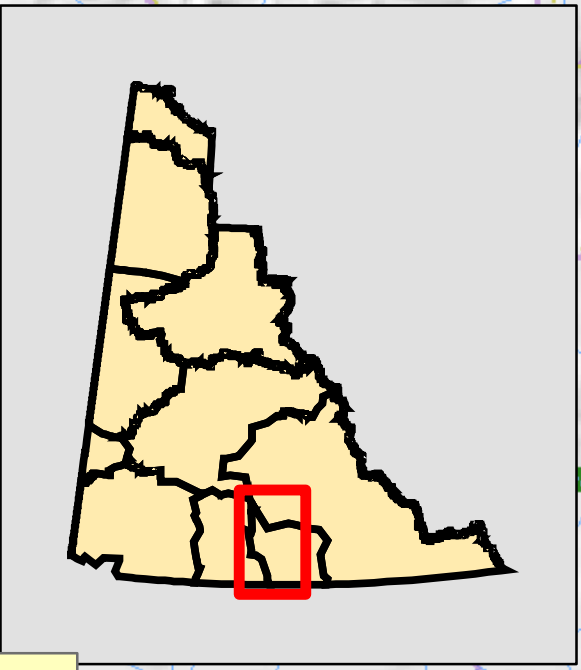


Note:
RRDC S-116B
within region

Option B doesn't include any Kaska TT



Legend

Planning Region Boundary

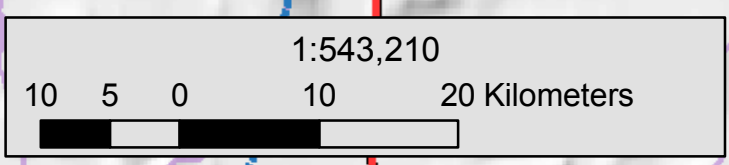
- Option A
- Option B
- Option C
- Final?

TTs & Settlement Lands (see label for colour coding)

- Traditional Territory Boundary
- Site Selection
- Rural Land Selections

Other Linework

- Municipal/Local Advisory/Area Dev't
- Trapline boundary
- Watershed



Map created on December 15th, 2011 by S. Skinner at YLUPC. For more information, contact him at sam@planyukon.ca or 867-667-7397

The southern Yukon planning region boundaries depicted here are for illustrative purposes only, and are not official boundaries. The source of the lines for the dashed potential boundaries are shown in the yellow call-out boxes.