

Social License for Energy Development in the North Yukon Regional Land Use Plan

By Shawn Francis

**Presentation to Dawson Planning Workshop
Dawson City, Yukon
January 18, 2012**



OVERVIEW

- Social license for resource development
- A long time ago in a planning region far, far away....North Yukon plan

SOCIAL LICENSE

- Social license: broad agreement from residents and neighbouring communities that an activity is acceptable in a specific location
- What needs to be done to gain social license?
- Why do proponents sometimes have difficulty obtaining social license for a project?
- What role can regional planning play?

SOCIAL LICENSE

- Acceptance of a project may not have much to do with the project itself
- Acceptability is gauged against a vision for a landscape and how that land use fits within it
- For much of Yukon, that vision is not defined
- Regional planning can define that vision

NORTH YUKON RLUP

- Central issue was oil and gas development in Eagle Plain and impacts on caribou and wetlands
- Strong desire from VG and YG Govt for the Commission to 'solve' the Eagle Plain question...provide social license
- What approach did the Commission take to achieving this task?

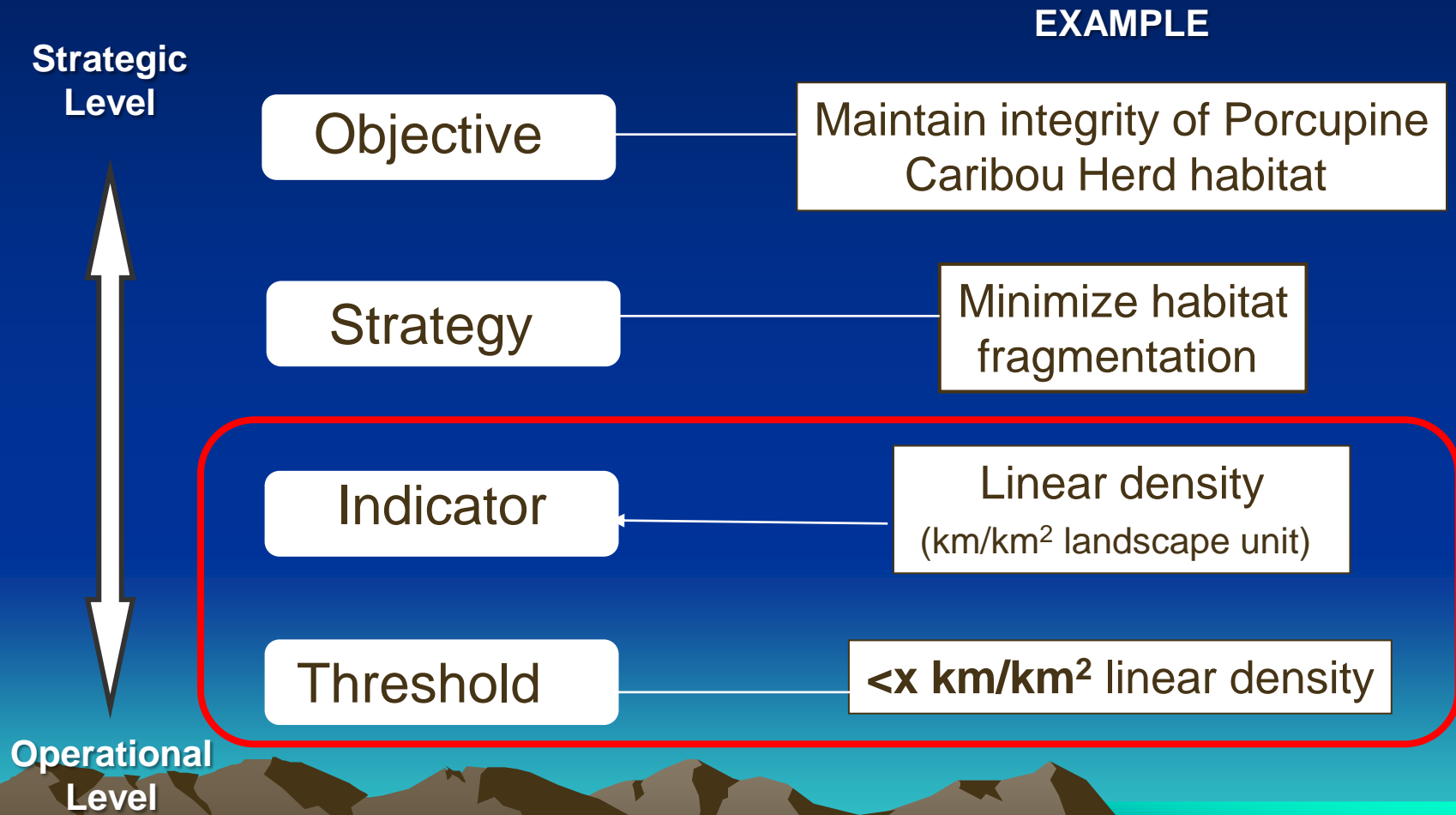


APPROACHES

- NYRLUP focused on zoning and landscape-level trade-offs
- Used limits of acceptable change concepts
- Embraced cumulative effects management tools that could be tied to project-level decision-making – manage footprint

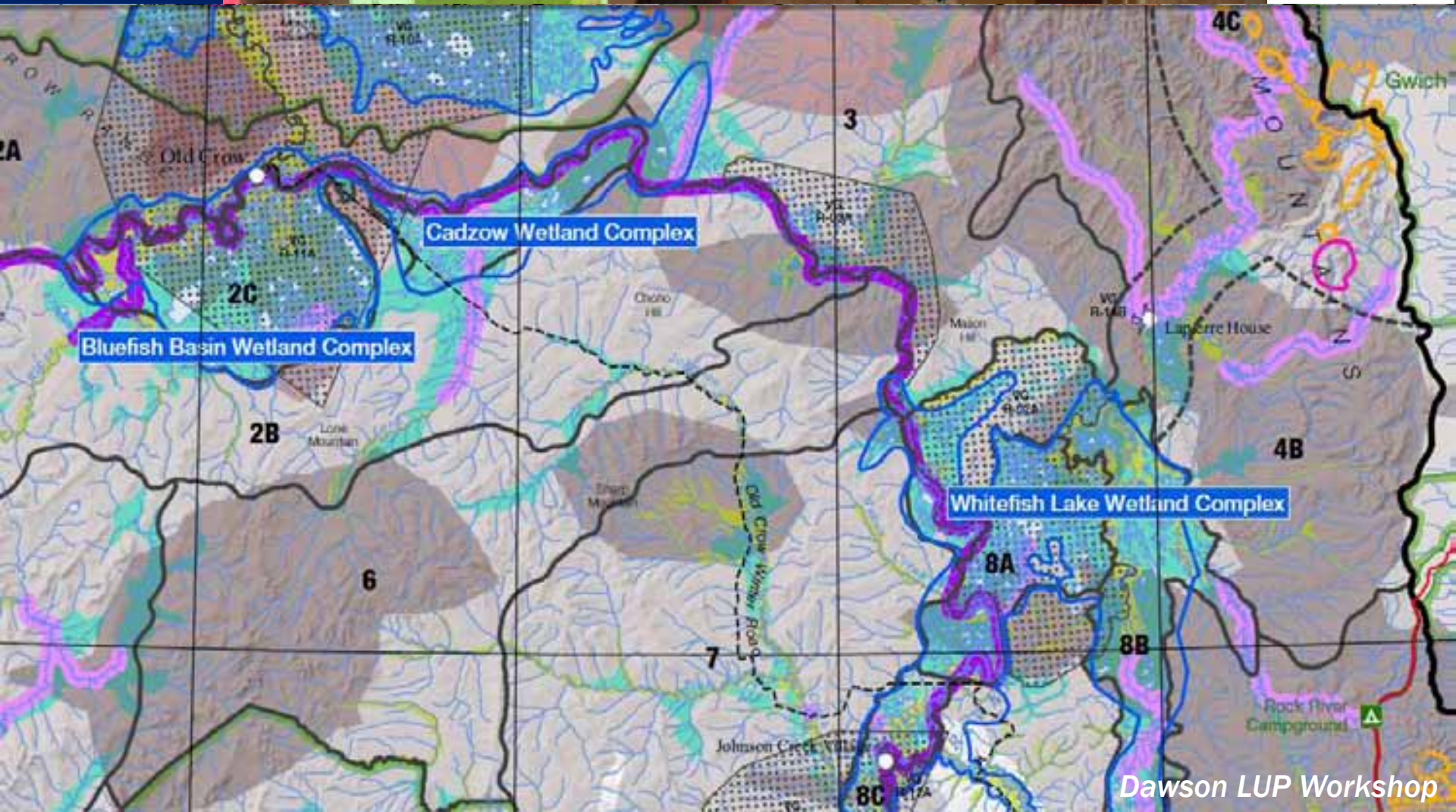
APPROACHES

Results-based management framework



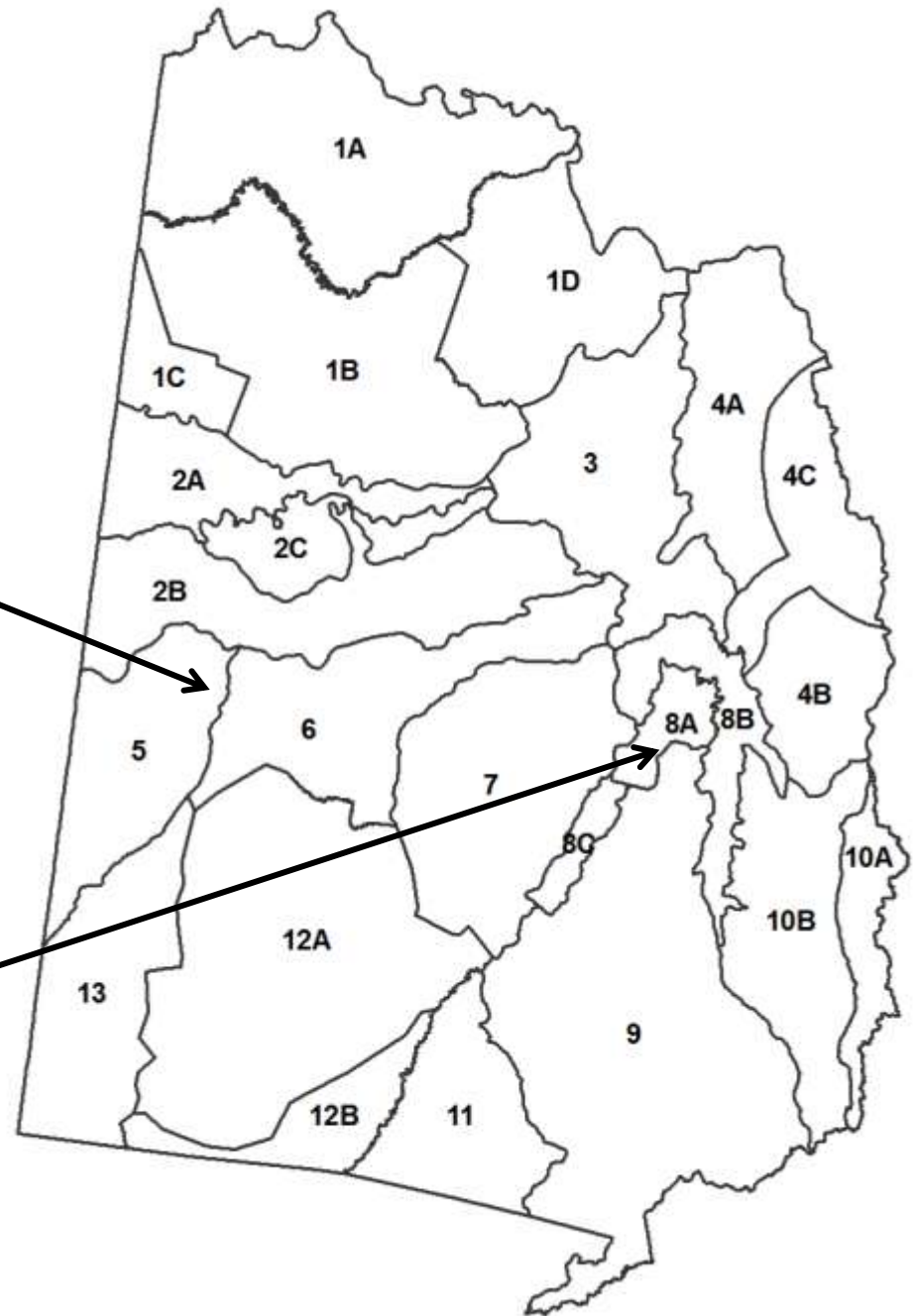
APPROACHES

Identify Values



APPROACHES

Identify Planning Units

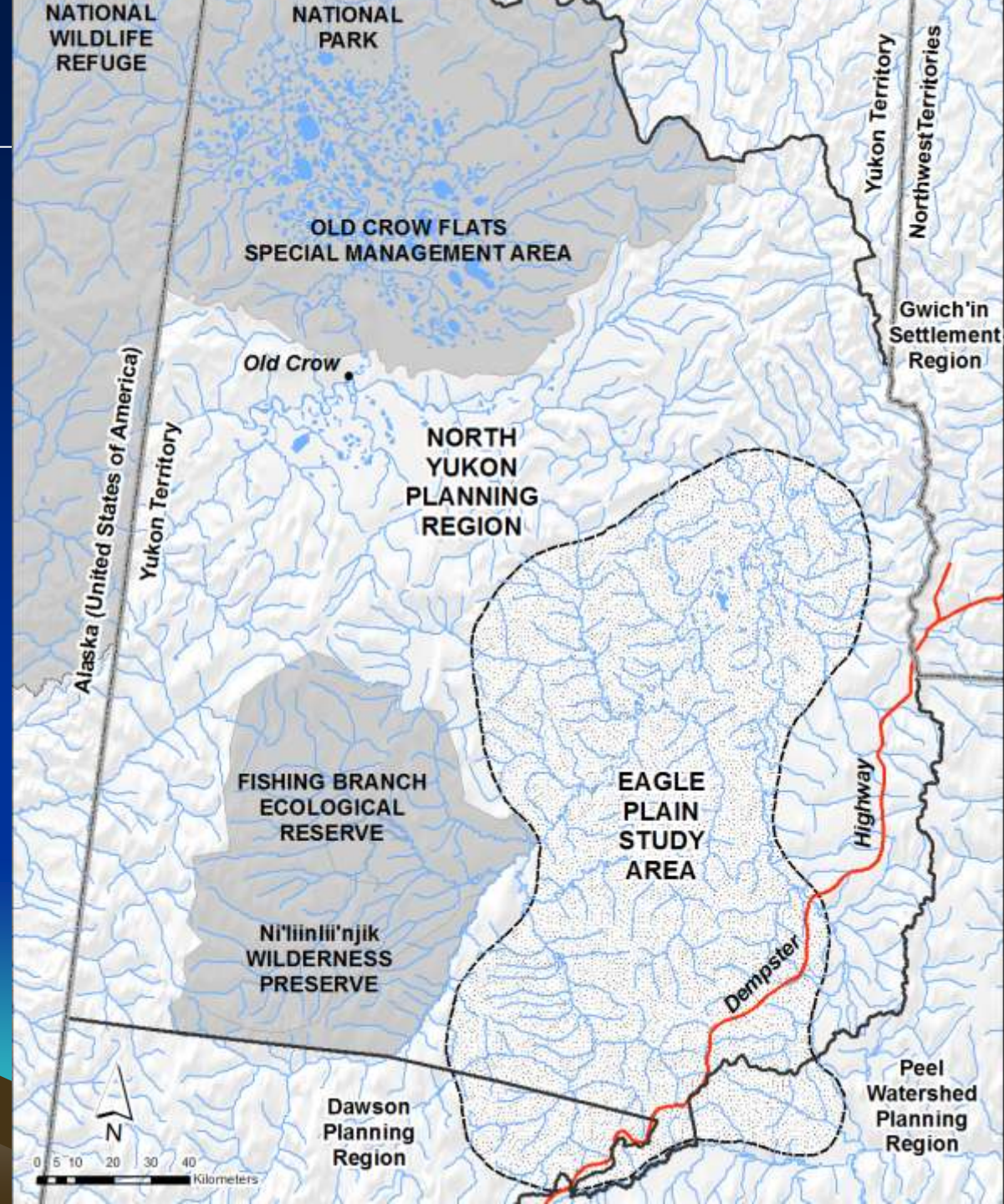


APPROACHES

Cumulative Effects Simulation Modeling



A Landscape Cumulative
Effects Simulator



APPROACHES

Example Modeling Results: BMPs

Parameter	BMP Scenario #1	BMP Scenario #2	BMP Scenario #3
Avrg. Seismic Line Width	5m	3m or less	3m or less
Seismic Line Lifespan	30 years	10 years	10 years
# Wells per Pad	1	1	4
Maximum Surface Disturbance	1.4% (20,000 ha)	1.0% (15,000 ha)	0.5% (7,500 ha)
Maximum Linear Feature Density	1.3 km/km ²	0.9 km/km ²	0.7 km/km ²

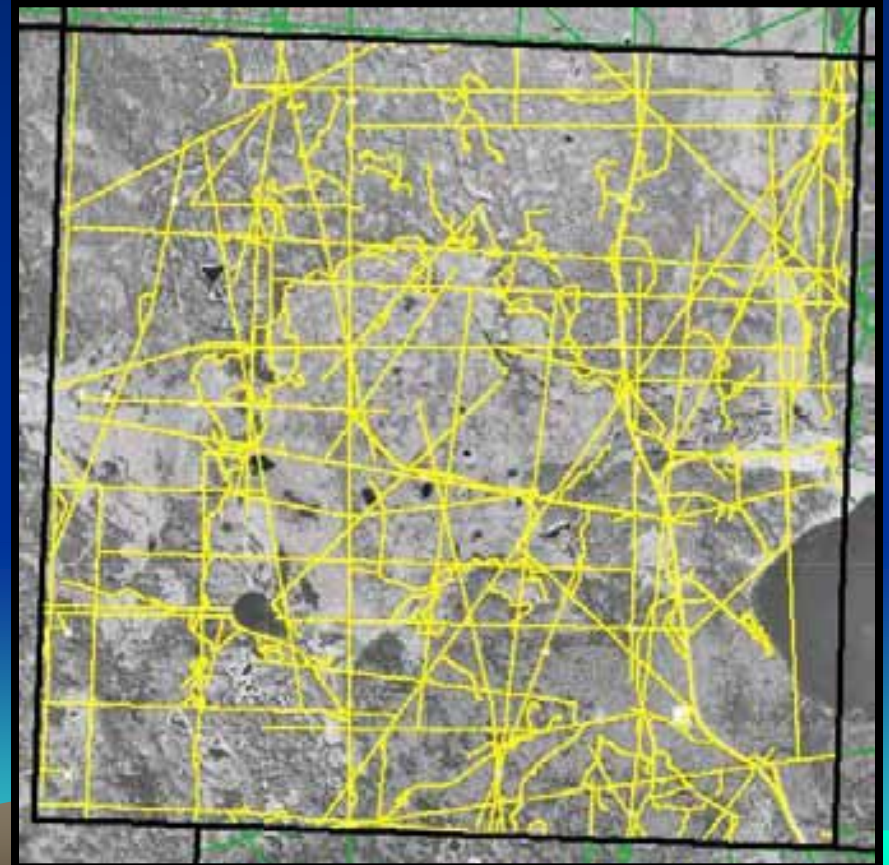
APPROACHES

Example Linear Density

1.5 km/km²

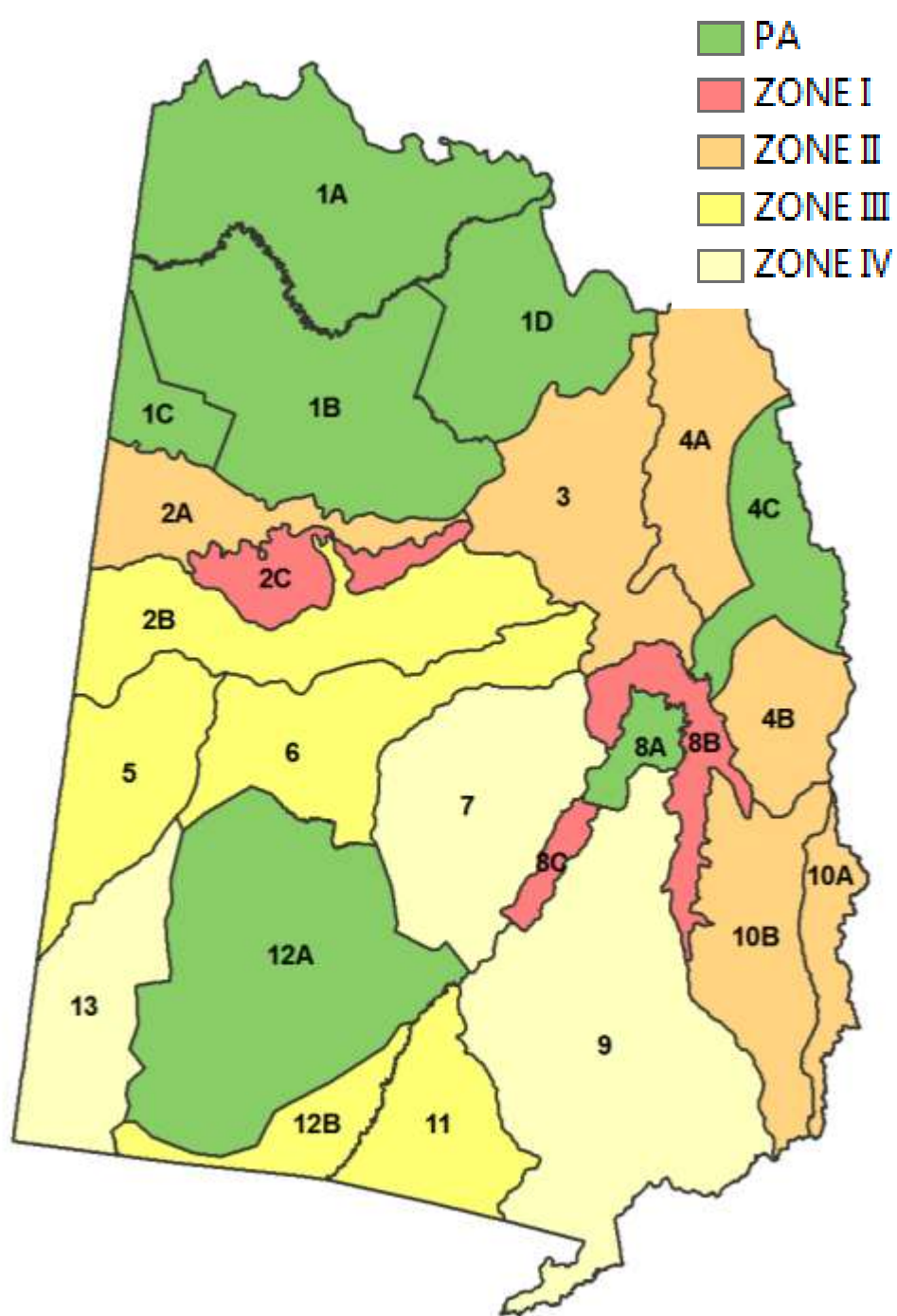
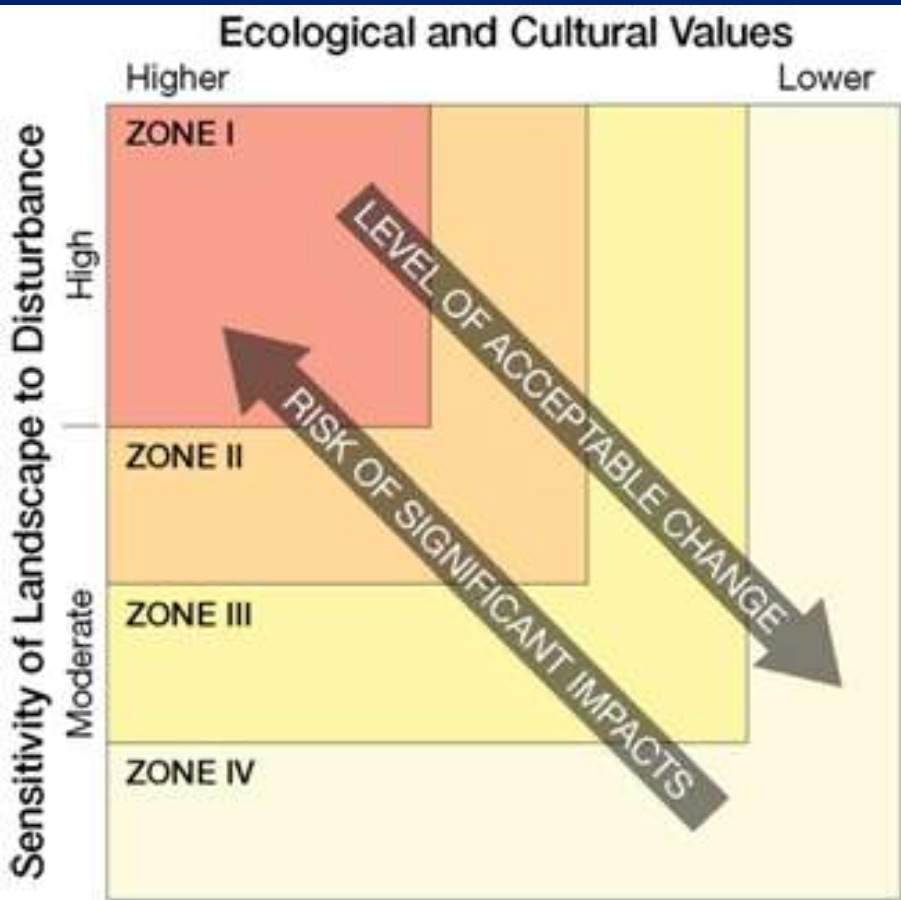


4.0 km/km²



APPROACHES

Zoning



APPROACHES

Zoning

IMA Zone	Management Intent	Cumulative Effects Indicators	Cautionary Level ¹	Critical Level
Zone I ²	Lowest development	Surface disturbance	0.075%	0.1%
		Linear density	0.075 km/km ²	0.1 km/km ²
Zone II	Low development	Surface disturbance	0.15%	0.2%
		Linear density	0.15 km/km ²	0.2 km/km ²
Zone III	Moderate development	Surface disturbance	0.375%	0.5%
		Linear density	0.375 km/km ²	0.5 km/km ²
Zone IV	Highest development	Surface disturbance	0.75%	1.0%
		Linear density	0.75 km/km ²	1.0 km/km ²

RISK

Very Low

Low

Moderate

High

Very High

LIKELIHOOD

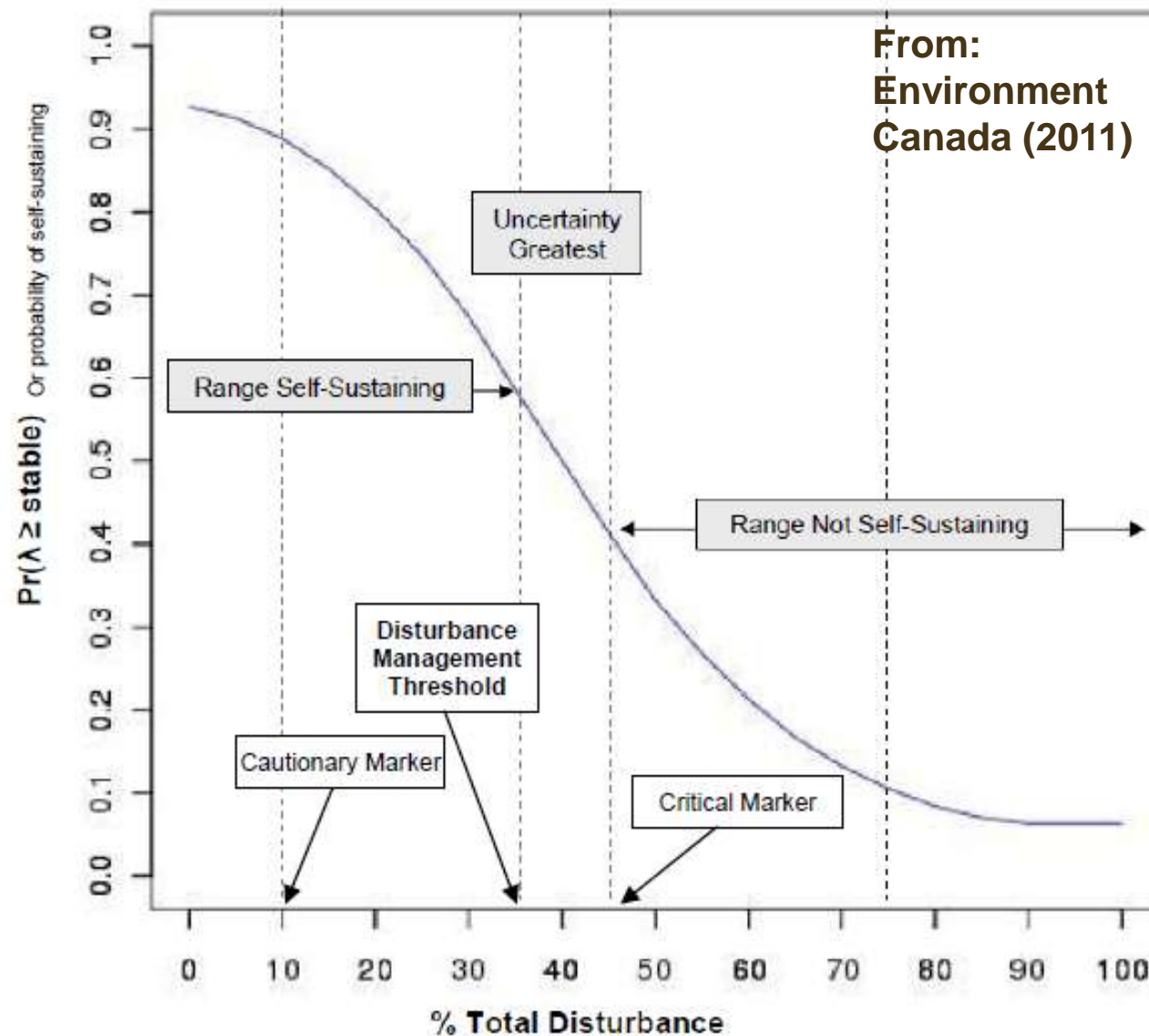
Very Likely

Likely

As Likely as Not

Unlikely

Very Unlikely



MANAGEMENT
SCENARIO

Conservation

Restoration

SUMMARY

- Achieving social license for resource development cannot be the sole responsibility of a proponent
- Regional planning can play an important role
- Landscape-level trade-offs will likely be required to achieve social license to operate

**Thank you for the opportunity to
share some thoughts**

**Good luck to the
Dawson Planning Commission**

Ecology and Society 16(4): 18

Copyright © 2011 by the author(s). Published here under license by the Resilience Alliance.
Francis, S. R., and J. Hamm. 2011. Looking forward: using scenario modeling to support regional land use
planning in Northern Yukon, Canada. *Ecology and Society* 16(4): 18.
<http://dx.doi.org/10.5751/ES-04532-160418>



Research, part of a Special Feature on [Balancing Ecology and Community using Cumulative Effects Models](#)

**Looking Forward: Using Scenario Modeling to Support Regional Land
Use Planning in Northern Yukon, Canada**

*Shawn R. Francis*¹ and *Jeff Hamm*²