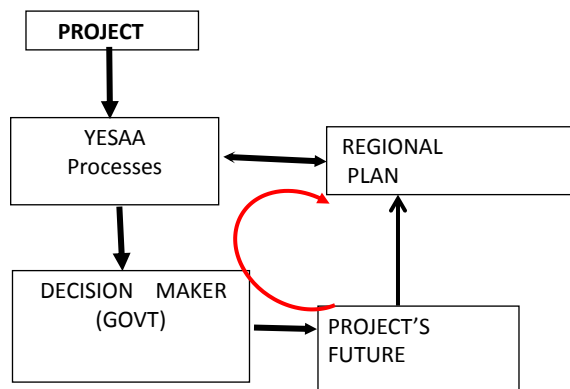


Challenges and Questions Associated with Performing Conformity Checks

A case study from Eagle Plains



Regional Planning and Project Specific Review (YESAA)




YESAB Yukon Environmental and Socio-economic Assessment Board PUBLIC NOTICE		
The Dawson Designated Office of the Yukon Environmental and Socio-economic Assessment Board (YESAB) has begun the evaluation of the following project proposal.		
Project Name: Eagle Plains 3D Seismic Survey		Project Proponent: Northern Cross (Yukon) Limited
Project Number 2013-0067	Sector Energy - Petroleum	Deadline for Comments June 6, 2013
The Proponent, Northern Cross (Yukon) Limited, is proposing a 3D Seismic Survey program over a 700km ² area to further delineate the extent of hydrocarbon prospectivity on oil and gas licences. In order to carry out the Project, the Proponent is seeking the right to access and conduct activities on Crown land. Project activities are proposed to occur between November 2013 and April 2014.		
Use of existing access (Chance road, seismic line) Establishment of seismic survey lines	Transportation of dynamite Overhead storage and use: 1 kg per survey station	

Project Name: Eagle Plains 3D Seismic Survey

Project Proponent: Northern Cross (Yukon) Limited

Project Number 2013-0067	Sector Energy - Petroleum	Deadline for Comments June 6, 2013
The Proponent, Northern Cross (Yukon) Limited, is proposing a 3D Seismic Survey program over a 700km ² area to further delineate the extent of hydrocarbon prospectivity on oil and gas licences. In order to carry out the Project, the Proponent is seeking the right to access and conduct activities on Crown land. Project activities are proposed to occur between November 2013 and April 2014.		
Project Activities		

 <p>Written comments, information, and/or questions related to this project proposal can be submitted on the YESAB Online Registry (YOR) www.yesab.ca/registry or by contacting the Dawson Designated Office. Views and information submitted before the deadline will be given full and fair consideration in the evaluation. For more information about assessments under the Yukon Environmental and Socio-economic Assessment Act, visit our website at www.yesab.ca.</p> <p>Dawson Designated Office, 3rd & Church St. Dawson City, Yukon Y0B 1G0 Phone: 867-993-4040, Fax: 867-993-4040 Email: dpawson@yesab.ca</p> <p>CALL TOLL FREE 1-866-322-4040 or visit</p> <p>www.yesab.ca/registry</p>
--

YUKON LAND USE
PLANNING COUNCIL

NORTH YUKON REGIONAL LAND USE PLAN CONFORMITY CHECK

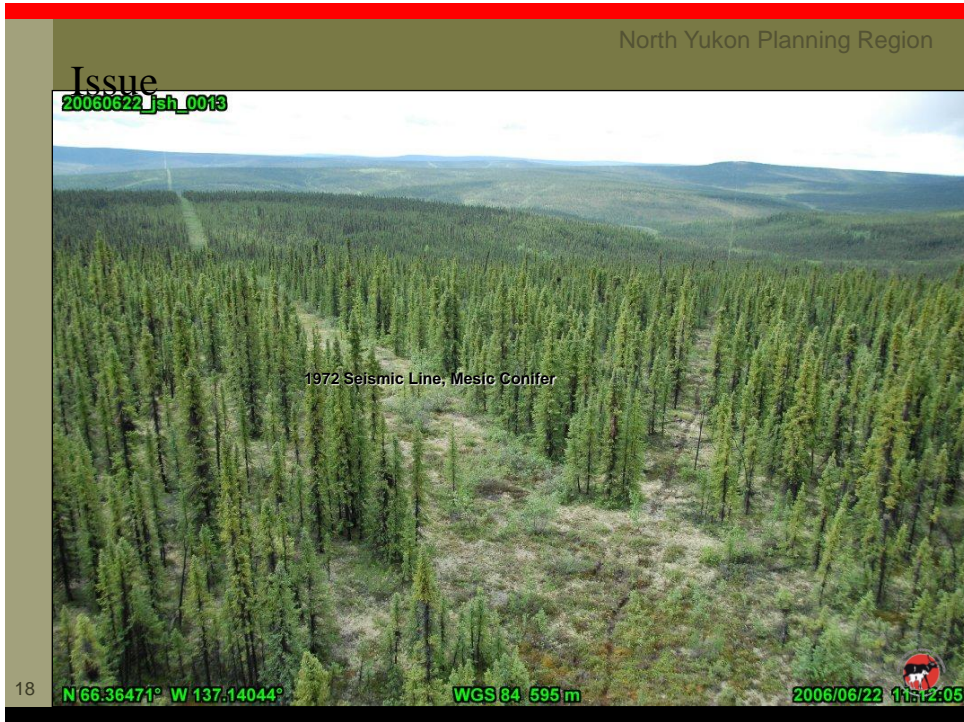
YESAB Project #	2013-0067 (066-1) June 24, 2013 information used		
Project Title:	Eagle Plains 3D Seismic Survey		
Date:	June 27, 2013	Completed by:	Ron Cruikshank
Submitted to:	YESAB Dawson Designated Office Box 5060 Dawson City, YT Y0B 1G0		

Project conforms to Regional Land Use Plan: (select one) **Yes**

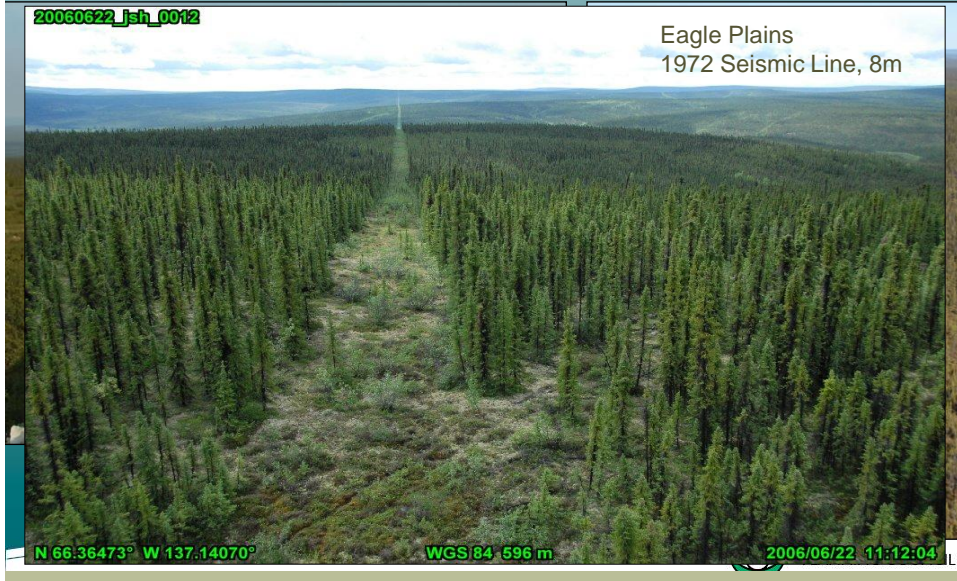
Background Information and Conformity Check Analysis

Affected Landscape Management Unit(LMU)(s): (insert rows as needed for additional LMUs) Map 1 and Section 6							
LM Unit #	9	LMU Name:		Eagle Plains			
Zoning:	IMA – Zone IV	Land Owner:		YG & VGFN			
Landscape Disturbance Indicators:) Table 3.2, sections 3.3.1.1, 5.1.1 Surface Disturbance (ha):							
LMU	Cautionary Level	Critical Level	*Current est. Level	Project Estimate	Total Estimate	Notification Rqrd**	Parties Notified
9	4811	6415	1246	248***	1495***	No	No
Linear Disturbance (km/km*):							
LMU	Cautionary Level	Critical Level	*Current est. Level	Project Estimate	Total Estimate	Notification Rqrd**	Parties Notified
9	4811	6415	1309	971***	2280***	No	No
*current estimated cumulative effects levels are to be provided by the Plan Parties **the YLUPC shall notify the Parties prior to submitting the conformity check to YESAB if they are concerned cautionary or critical levels may be reached ***estimates based upon the definition of Functional Disturbance, pg 3-2, North Yukon Regional Land Use Plan, June 2009.							

YUKON LAND USE
PLANNING COUNCIL



Land Use

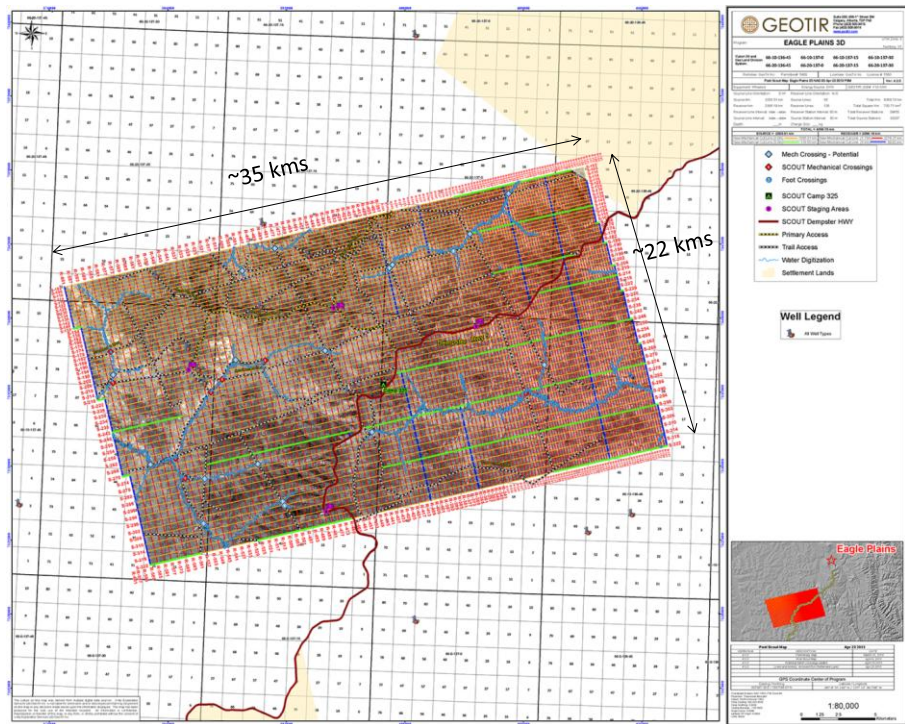


North Yukon Plan

IMA Zone	Management Intent	Cumulative Effects Indicators	Cautionary Level ¹	Critical Level
Zone I ²	Lowest development	Surface disturbance	0.075%	0.1%
		Linear density	0.075 km/km ²	0.1 km/km ²
Zone II	Low development	Surface disturbance	0.15%	0.2%
		Linear density	0.15 km/km ²	0.2 km/km ²
Zone III	Moderate development	Surface disturbance	0.375%	0.5%
		Linear density	0.375 km/km ²	0.5 km/km ²
Zone IV	Highest development	Surface disturbance	0.75%	1.0%
		Linear density	0.75 km/km ²	1.0 km/km ²



YUKON LAND USE
PLANNING COUNCIL

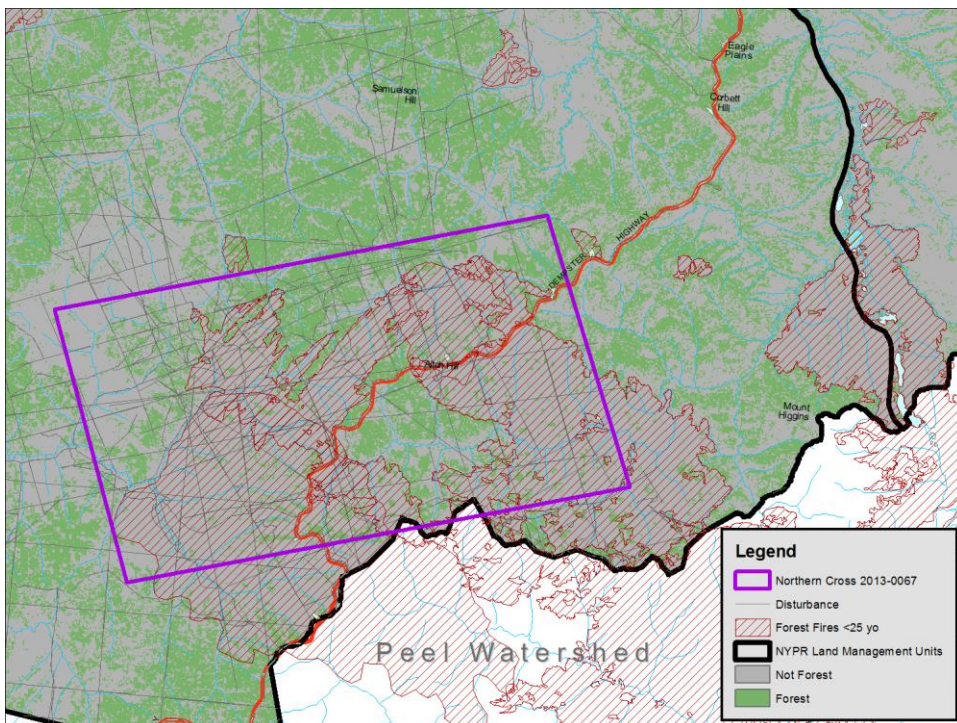


North Yukon Regional Land Use Plan:

Functional Disturbance

- Physical land use disruption that result in disruption of soil or hydrology or that requires the cutting of trees.
- Activities considered exempt from functional disturbance creation are:
 - 1) new linear features less than 1.5 m in width;
 - 2) land use activities that occur on frozen water-bodies;
 - 3) winter work with no required cutting of trees;
 - 4) winter work that utilizes existing disturbance and linear features

Images Near Project



LMU/ Zone	Indicator	Cautionary Level	Critical Level	Current	After Project Amount	% of Critical
9. Eagle Plains:	Surface Disturbance	4811 ha	6415 ha	1246 ha	1495 ha	23%
IMA IV	Linear Density	4811 km	6415 km	1309 km	2281 Km/km ²	35%

Assumptions:

- only 450 sq. kms will be subject to seismic work
- 26% of the area is currently forested
- 1.75 m receiver lines not 3 metres as in public notice
- Current level based by North Yukon Commission's work in the absence of # from the Parties



North Yukon Regional Plan Implementation Plan

- YG will track existing, new and recovered disturbance levels
- Parties (VFGN, YG) will provide Cumulative Effects reporting to Council



Process Questions

- What happens if there is inconsistency in the information provided by the Proponent?
- What is the formal process by which YLUPC informs YESAA seeking clarification on the project? (difficult in a time sensitive process)
- Should YLUPC work directly with the proponent or always through YESAA?



Process Questions

- Can we improve our defn. of functional disturbance and its link to Surface disturbance and Linear Density? (What is a tree?)
- When will we get the “baseline” and “regeneration” rates from the Parties?
- What is the long term strategy for permitting more such work within the thresholds of the plan?

