

PEEL PLAN HIGHLIGHTS

The Peel Regional Land Use Plan (the Plan) was finalized in August 2019 by the five Parties: Yukon government, Tr'ondëk Hwëch'in, First Nation of Na-Cho Nyäk Dun, Vuntut Gwitchin First Nation and the Gwich'in Tribal Council. The Plan includes several guiding features:

- Identification of 16 distinct mapped areas, called Landscape Management Units (LMU), with assigned management goals. Each area has boundaries based on features such as ecological or cultural characteristics, and First Nation Settlement Land boundaries.
- Policies designed to satisfy the core principle of the Plan, which is sustainable development. Some examples are:
 - Prohibit mineral staking and new surface access in the Conservation Areas.
 - Delist the Wind River Trail under the *Highways Act*, to prohibit its use for access to existing claims.
 - Designate off-road vehicle (ORV) management areas, in order to restrict use to specified trails (i.e. outside sensitive habitat).
 - Collection of adequate baseline data (e.g., heritage resource, fish, wildlife, waterbird (e.g., ducks, geese, swans, loons, grebes, gulls, terns, shorebirds) habitat, water quality) will be required prior to any development.
 - Any new roads are to be temporary and not for public use.
 - No infrastructure should be allowed along major rivers.
 - Oil and gas activities are to be prohibited throughout the Conservation Areas.
 - Uranium and coal bed methane development will not be undertaken without policy and operating guidelines in place.
- Cumulative effects of industrial activities will be monitored and limited, in relation to established thresholds.

The Plan identifies three different types of Conservation Areas. New mineral staking and new road development are not allowed in these areas. Existing claims are being honored in the Conservation Areas however, and mineral activities could be permitted through normal assessment and regulatory processes. The three kinds of Conservation Areas are:

- **Special Management Areas (SMA):** Pre-existing mineral claims will be recognized, however new mineral staking will not be allowed in these areas.
- **Wilderness Areas (WA):** Pre-existing mineral claims will be recognized, however new mineral claims will not be allowed in these areas at least until 2030. This withdrawal status will be evaluated as part of a formal public review of the whole Plan, conducted jointly by the five Parties to the Plan.
- **Wilderness Areas - Boreal Caribou (WA-BC):** Pre-existing claims will be recognized, however mineral staking will not be allowed in this north east corner of the region, as it is to be managed with the goal of protecting critical habitat for Boreal caribou. . That status will be reviewed prior to 2030, as with the WAs.

There are also **Integrated Management Areas (IMAs)**: New mineral claim staking is allowed in IMAs. Through existing assessment and regulatory mechanisms, industrial activities and development of new roads and trails could be permitted. Any mineral exploration and development proposals will also be subject to conformity checks, to ensure that they comply with the Plan.

CONTACT INFORMATION

Tr'ondëk Hwëch'in
gerbx@live.ca
867 993 6420

Na-Cho Nyäk Dun
gerbx@live.ca
867 993 6420

Vuntut Gwitchin
nrd@vgfn.net
867 966 3261 (255)

Gwich'in Tribal Council
james.thorbourne@gdcgroup.ca
867 777 7908

Government of Yukon
land.planning@gov.yk.ca
867 667 3150

MINERAL ACTIVITIES IN THE PEEL RIVER WATERSHED

What You Need to Know about the Plan

January 2020

This is a brief summary of the
2019 Peel Watershed Regional Land Use Plan,
and provides an overview of the requirements for
mineral exploration and development activities
in the Peel Region.



PLANNING TO WORK YOUR MINERAL CLAIMS IN THE PEEL REGION?

Class 1 activities will require notification throughout the Peel region, as of April 1, 2020. Classes 2, 3 and 4 activities are submitted as usual, to the regulator (e.g. Yukon government) and YESAB. Prior to submitting your Class 1 Notification or your Class 2, 3, or 4 project proposal, you should:

- review the [Plan](#) to ensure your proposed project conforms; and
- engage with affected First Nations regarding your proposed project.

During assessment and regulatory processes:

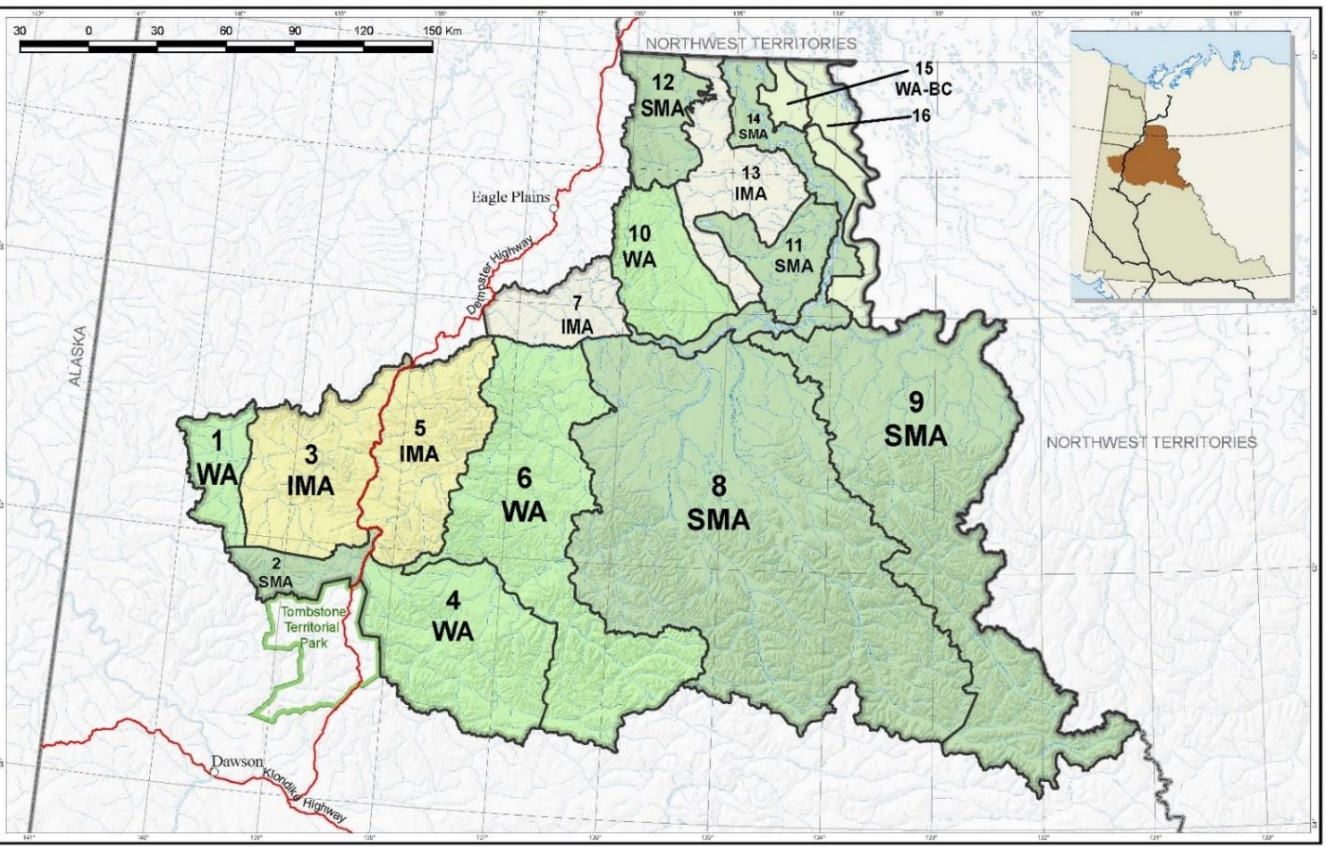
- a third party, such as the Yukon Land Use Planning Council will ensure that your proposed activities conform with the Plan;
- Yukon government and affected First Nations will consult with one another.

If proposed activities are approved, permits would include appropriate:

- terms and conditions as per QMA/PMA regulations Schedule 1;
- terms and conditions as per assessment and consultation;
- terms related to Class 1 activities;
- additional terms and conditions, in order to ensure conformity to the higher standards set out in the Plan. See Tables 1&2 for examples ➡

For more information on how to apply for mining authorizations, and regarding potential terms and conditions, please contact your district Mining Recorders Office or visit www.yukonminingrecorder.ca

LANDSCAPE MANAGEMENT UNITS in the PEEL REGION (see Tables 1 & 2) ➡



PEEL PLAN - TERMS and CONDITIONS for MINERAL ACTIVITIES

Table 1: Conservations Areas (SMA, WA, WA-BC)

	<ul style="list-style-type: none">• Mineral development activities can be conducted on existing claims, providing proponents have met applicable regulatory requirements.• Outside of existing dispositions, new access (road or trail) development is not permitted.• Use of vehicles is restricted to the Hart River Trail, existing trails in Dempster Highway area, within licensed camps and existing facilities.• Off road vehicle use is not permitted in sensitive habitat (i.e. wetlands, alpine areas) in spring, summer or fall.• Baseline data (e.g., heritage resource, fish, wildlife, waterbird, habitat, water quality) will be required, prior to any development.• All mineral exploration and development activities must conform to the Peel Plan.
SMA 8, 9, 11, 12, 14	<ul style="list-style-type: none">• New mineral staking is not permitted.• Use of the Wind River Trail is not permitted.
WA 1, 2, 4, 6, 10, 11, 12	<ul style="list-style-type: none">• New mineral staking is not permitted, however this status will be reviewed in the future.
WA-BC 15, 16	<ul style="list-style-type: none">• New mineral staking is not permitted, however this status will be reviewed in the future.

Table 2: Integrated Management Areas (IMA)

IMA 3 5 7 13	<ul style="list-style-type: none">• New mineral staking is permitted, and mineral exploration and development activities can be undertaken (on existing and new claims), provided proponents have met applicable regulatory requirements.• Any new surface access will be managed and requires adequate bonding for reclamation, and reclamation to be undertaken once the trail/road is no longer required. Public access on new roads will not be allowed.• Use of vehicles is restricted to new access (as above), and existing trails in Dempster Highway area (e.g. Hart River Road), licensed camps and existing facilities.• Off road vehicle use is not permitted in sensitive habitat of wetlands or alpine areas in the spring, summer and fall.• Baseline data (e.g., heritage resource, fish, wildlife, waterbird, habitat, water quality) will be required, prior to any development.• Cumulative surface disturbance will be limited by predetermined thresholds and these will be set according to zone classification.• Activities will be monitored and limits to cumulative impacts established and enforced.• All mineral exploration and development activities must conform to the Peel Plan.• All mineral exploration and development activities must conform to any implementation provisions developed to protect Boreal Caribou in IMA 13
---------------------------------	----------------------------------------------------------------------------------------------------------------------------------------------------------------------------------------------------------------------------------------------------------------------------------------------------------------------------------------------------------------------------------------------------------------------------------------------------------------------------------------------------------------------------------------------------------------------------------------------------------------------------------------------------------------------------------------------------------------------------------------------------------------------------------------------------------------------------------------------------------------------------------------------------------------------------------------------------------------------------------------------------------------------------------------------------------------------------------------------------------------------------------------------------------------------------------------------------------------------------------------------------------------------------------------------------------------------------------------------------------------------------------------------------------------------------------------------------------

For details on the Peel Regional Watershed Land Use Plan, consult:

<https://yukon.ca/peel-watershed-regional-land-use-plan>

Hard copies of the Plan are available upon request:

Phone 867.667.3150 **Toll Free** 1.800.661.0408 (#3150) **Email:** land.planning@gov.yk.ca

